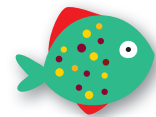




ABPM for children 3 – 12 years

custo screen pediatric | up to 72 hours of recording



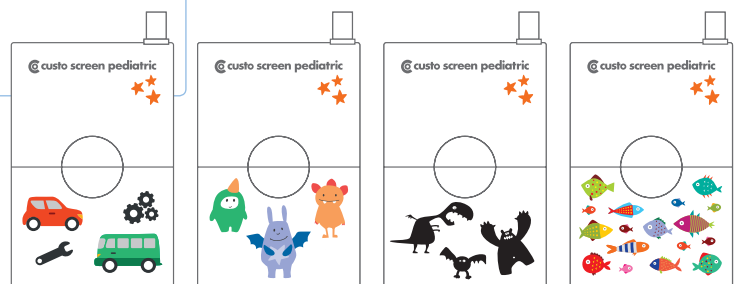
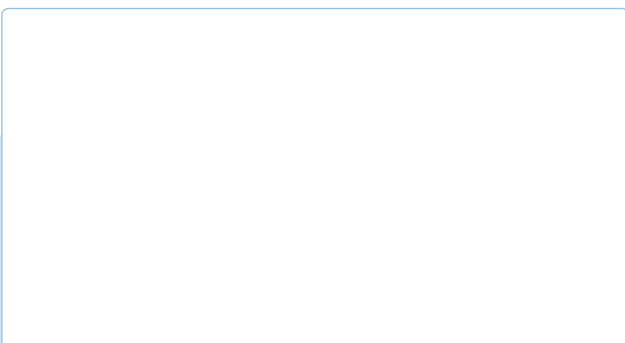
custo screen pediatric

- Higher patient comfort due to low operating noise and blood pressure adapted inflation control
- High reliability due to two pressure relief valves
- Skin-friendly, synthetic cuff in sizes pediatric to standard
- Child-friendly motifs on the battery compartment cover
- Wireless data transfer from the recorder to the PC
- Validated according to ESH International Protocol 2010

custo diagnostic (software)

- Comparison of all examinations of a patient
- Easy reporting with predefined text modules
- Clear A4 printouts on normal paper
- Paperless medical practice: mailing of evaluations and findings in email, fax and PDF format as well as in an evaluation file (.cst)
- Versatile connection possibilities into existing IT structures (HL7, FDA-XML, SQL, GDT, SCP)

Your authorised custo med dealer



Technical data custo screen pediatric			
Measurement method	Oscillometric measurement procedure automatic zero balancing		
Measurement range	Heart rate	35 – 220 beats/min	
	Systolic blood pressure	50 – 160 mmHg	
	Diastolic blood pressure	30 – 110 mmHg	
Measuring accuracy		Systole	Diastole
	Average deviation	-1.4 mmHg	-0.7 mmHg
	Standard deviation	3 mmHg	3,2 mmHg
Number of measurements	max. 500		
Recording time	max. 72 hours		
Duration of one measurement	approx. 30 seconds		
Measuring intervals	can be set to 5 to 90 minutes in the software		
Cuff pressure	max. 200 mmHg		
Cuff sizes	pediatric	14 – 20 cm	
	small	20 – 24 cm	
	standard with/without retainer	24 – 32 cm	
Data transfer	infrared interface with USB connection		
Power supply	3 Mignon 1.5 V, type AA 3 rechargeable batteries, Ni-MH, 1.2 V, min. 1500 mAh		
Dimensions	approx. 100 * 66 * 26 mm (L * W * H)		
Weight	approx. 159 g (without batteries)		
Classification	Device with internal power supply, Class IIa, Type BF		
Applied standards	IEC 60601-1, IEC 60601-1-2, IEC 80601-2-30		

Components for
ABPM:
custo screen pediatric
blood pressure cuff
3 batteries
neoprene bag
belt
custo com IR or
custo multi com

ABPM software functions

- Presentation of the measured values as a trend with hourly and individual values, as a pie chart or as a table
- Automatic report with average values and information on hypertension according to *"2016 European Society of Hypertension guidelines for the management of high blood pressure in children and adolescents"*
- Patient diary which can be printed and kept digitally

