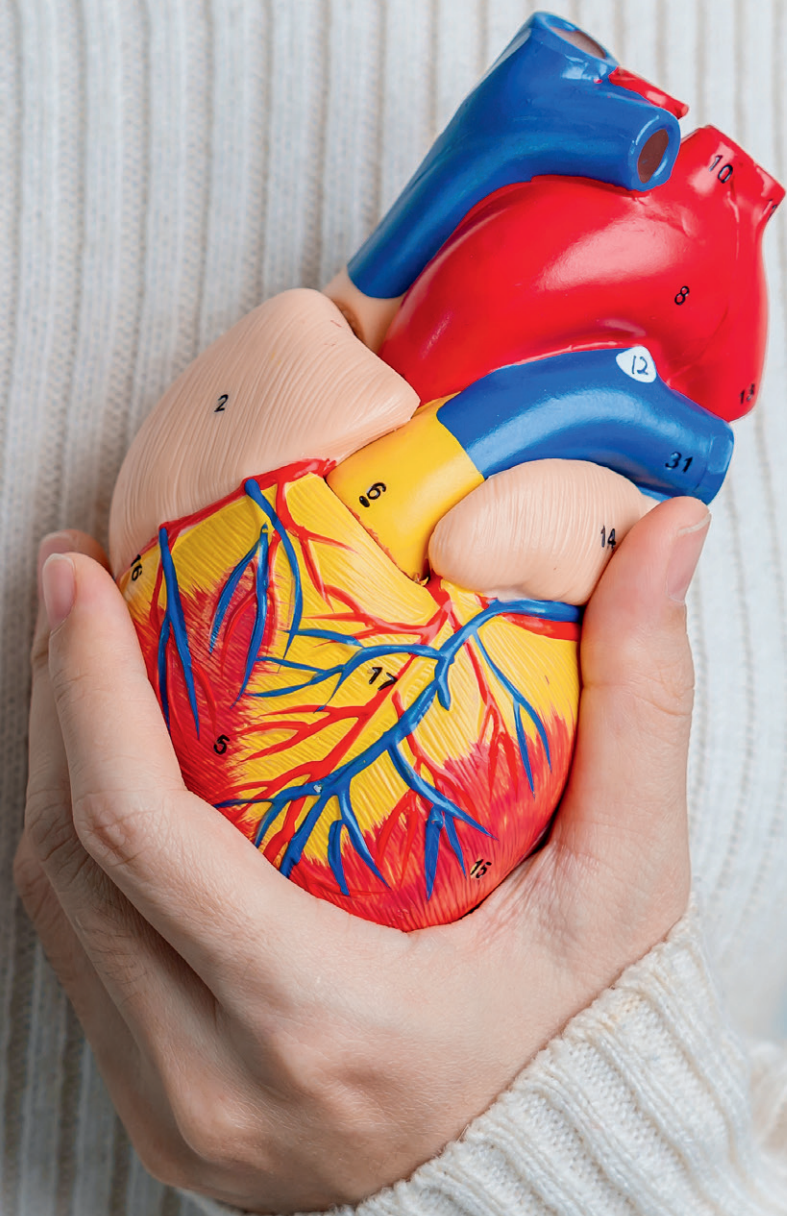


# *Women's hearts beat differently !*

*Gender differences in cardiopulmonary diagnostics*





# Just a small difference?

## Gender Medicine – optimized medicine for everyone!

It is well known that women and men show different symptoms of coronary heart disease. In the past, medical knowledge and its implementation were exclusively focused on men. Nowadays, it is scientifically accepted that men and women show different results with the same therapy. Therefore, it is necessary to make gender-specific distinctions already in diagnostics. For this reason, custo med has integrated this classification into its various modules.

### Gender Medicine in custo diagnostic

<p><b>Resting ECG</b></p> <ul style="list-style-type: none"> <li>• QT analysis</li> <li>• Interpretation takes into account gender differences</li> </ul>	<p><b>Stress ECG</b></p> <ul style="list-style-type: none"> <li>• Limit values are gender-specific configurable</li> <li>• Calculation of the target load (also age adjusted)</li> </ul>	<p><b>Holter</b></p> <ul style="list-style-type: none"> <li>• Gender-specific HRV differences in vegetative diagnostics (also age adjusted)</li> </ul>
<p><b>ABPM</b></p> <ul style="list-style-type: none"> <li>• Limit values are gender-specific configurable</li> <li>• Risk factors adjusted: For men &gt; 55 For woman &gt; 65</li> </ul>	<p><b>Central Blood Pressure</b></p> <ul style="list-style-type: none"> <li>• Augmentation index, Augmentation pressure, pulse wave and PWV are gender-specific determined</li> </ul>	<p><b>Spirometry</b></p> <ul style="list-style-type: none"> <li>• Limit values are gender-specific configurable</li> <li>• All target values are gender-specific</li> </ul>

