

merged pdf export from custo diagnostic and Cortex

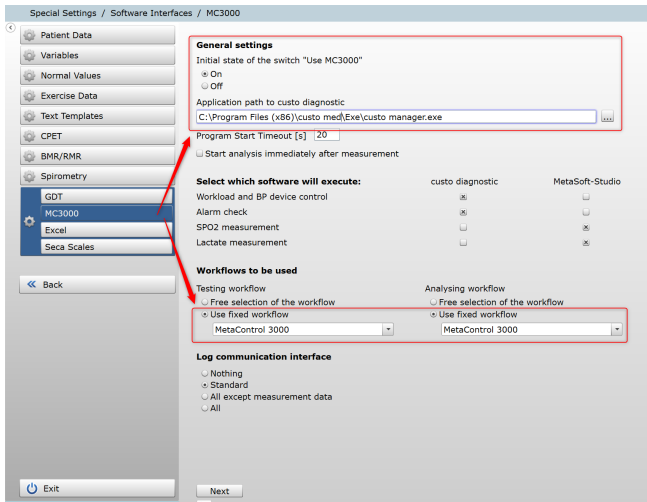
Introduction:

The article describes, how can i configure the merged pdf export from custo diagnostic and cortex, and the Workflows.

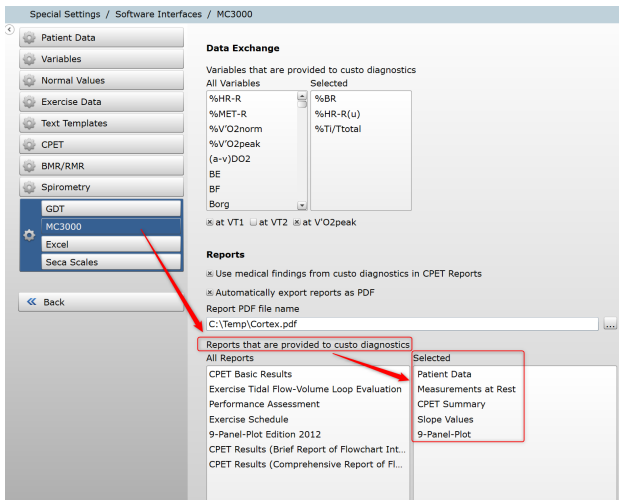
Configuration Cortex:

Licences activated? see => https://www.customed.de/docs/x/BQA_Ag

Check setting mc3000 Workflow is activated:

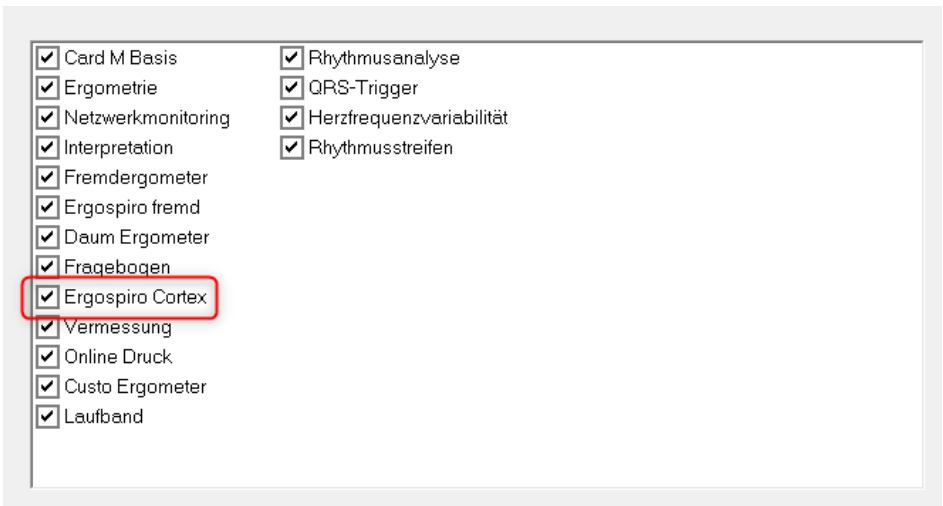


Printout is configured:

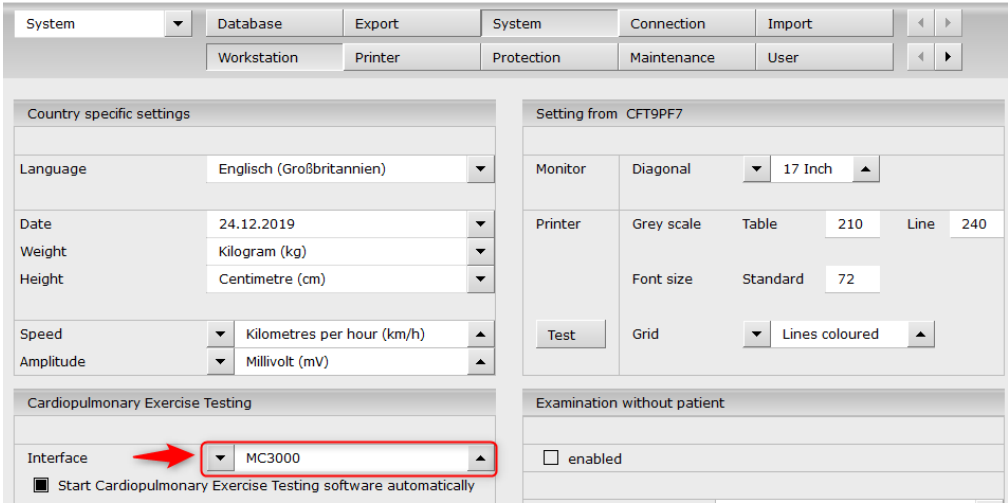


Configuration custo diagnostic:

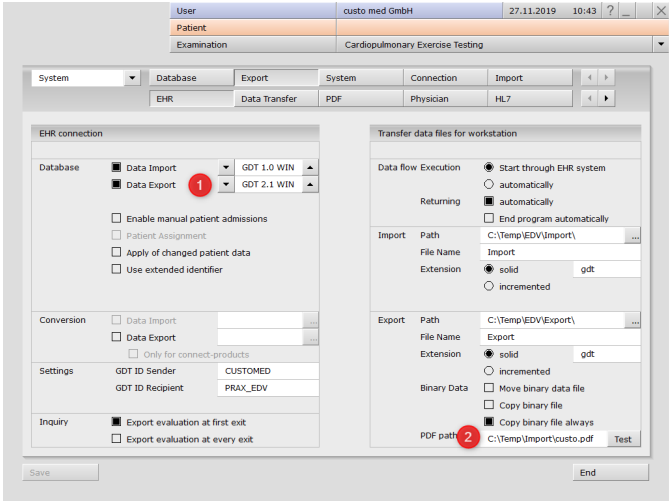
Keyoption is integrated:



Interface is configured:

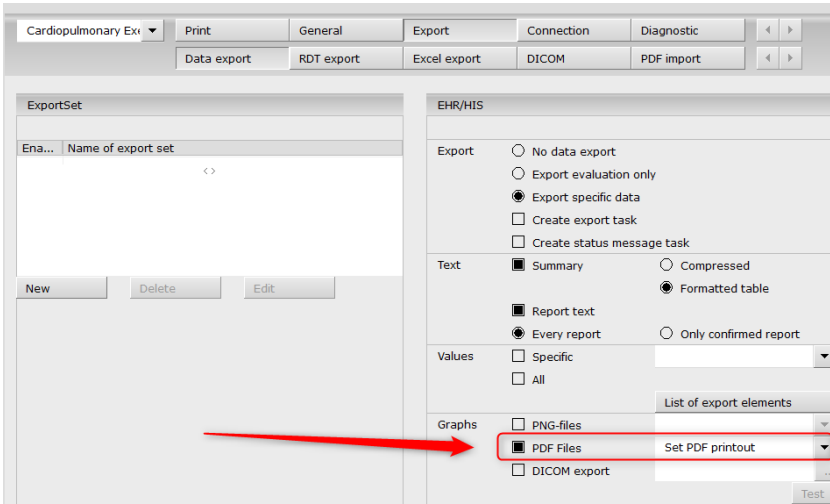


EPR System is configured for the export

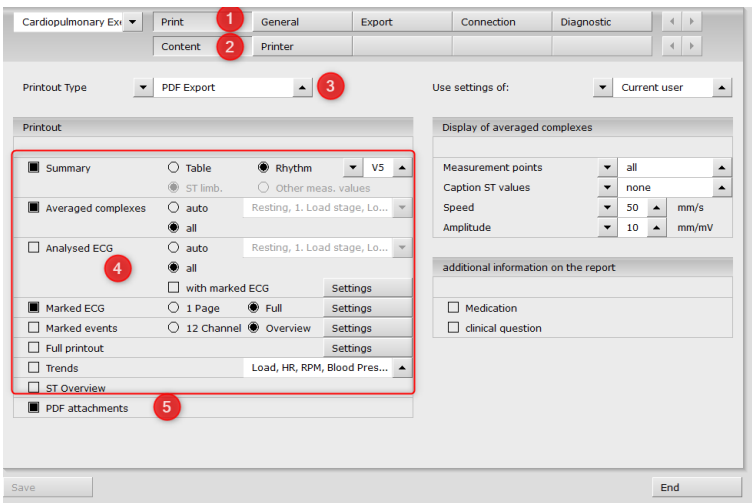


(1) Option "GDT 2.1" is necessary (2) Export path pdf file

PDF File for export is activated:



PDF Printout is configured:



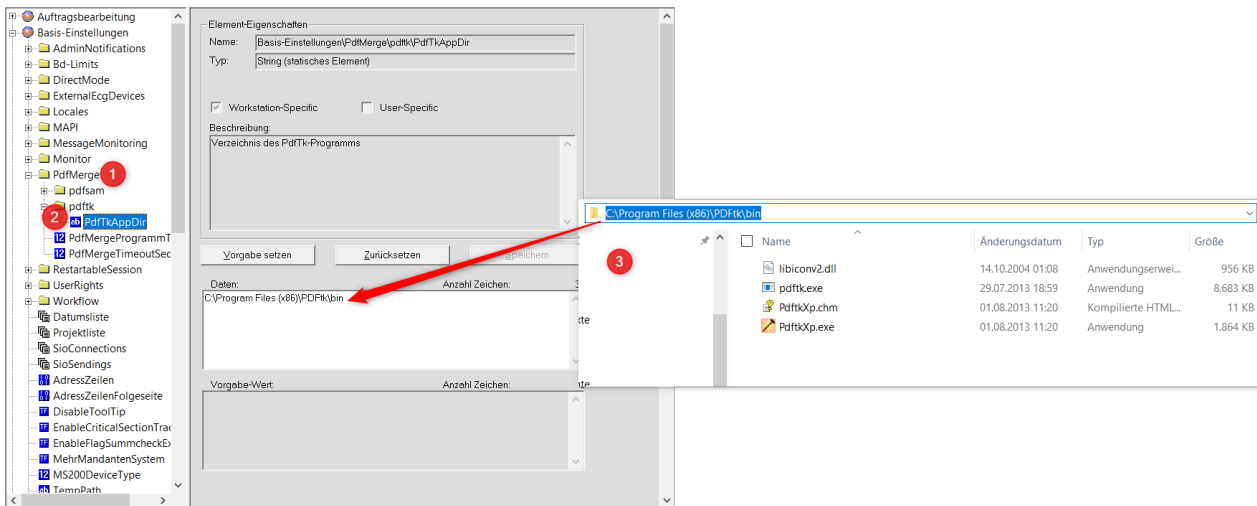
open the configuration Page from CPET (1) Print (2) Content (3) Printout Type "PDF Export" (4) select Print Options (5) PDF attachments for the cortex printout

Install tool `pdftk_free`, see attachment



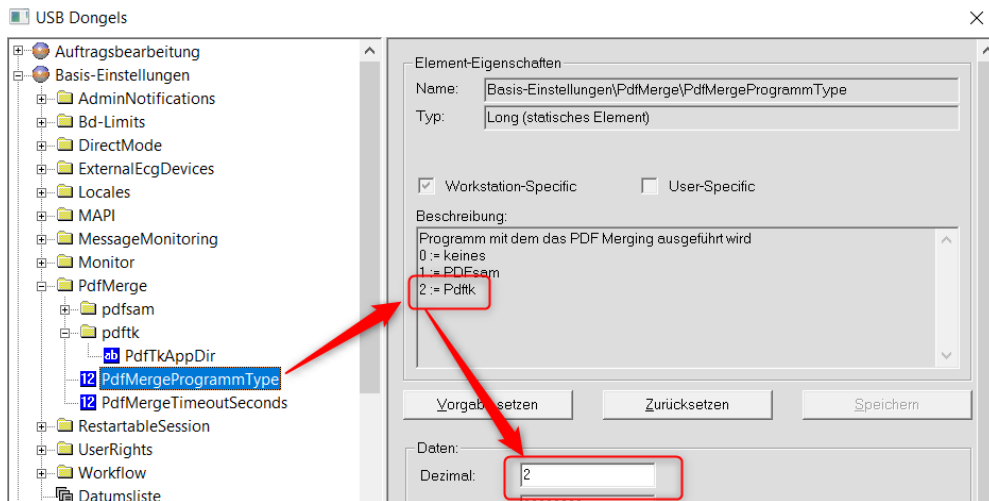
Urgently!! Please read the conditions for use this tool, see <https://www.pdfabs.com/tools/pdfstk-the-pdf-toolkit/>

Configuration Servicecenter custo diagnostic:



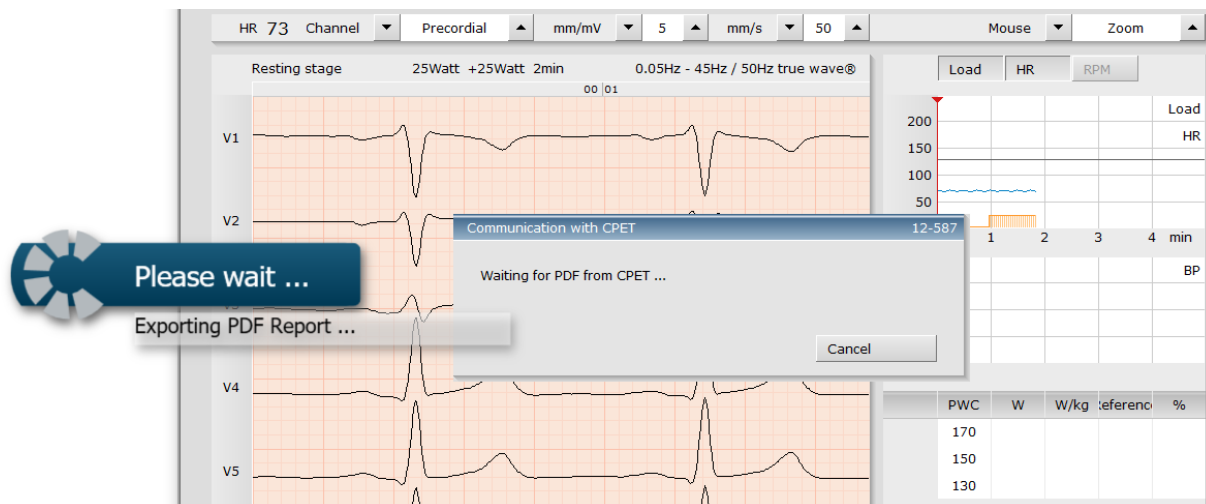
Servicecenter Settings (1) "PDFMerge" (2) Folder from PdfTk (3) read the folder and save

and set the PDF Merge Programm Type "2" and save:



Workflow:

1. Start custo diagnostic and open the CPET Evaluation in custo diagnostic
2. Click "End" in the evaluation and we can see the following window:



3. available the Export Option "Perform Export"

End 103-1

Status of Evaluation

- evaluation preconfirmed
- confirmed
- printed
- locked

Export

Data exported: yes

- Perform export
- with export order

Options for data transfer

Send evaluation to

<input checked="" type="checkbox"/> Default	Out
<input type="checkbox"/> E-Mail	

Send report via

- E-Mail (PDF attachment)
- E-Mail (Text)
- Fax

Confirm Cancel

4. the result

