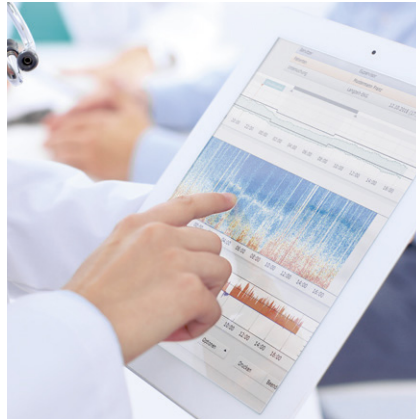


Tracking Post-/Long-COVID

Cardiopulmonary Functional Diagnostics

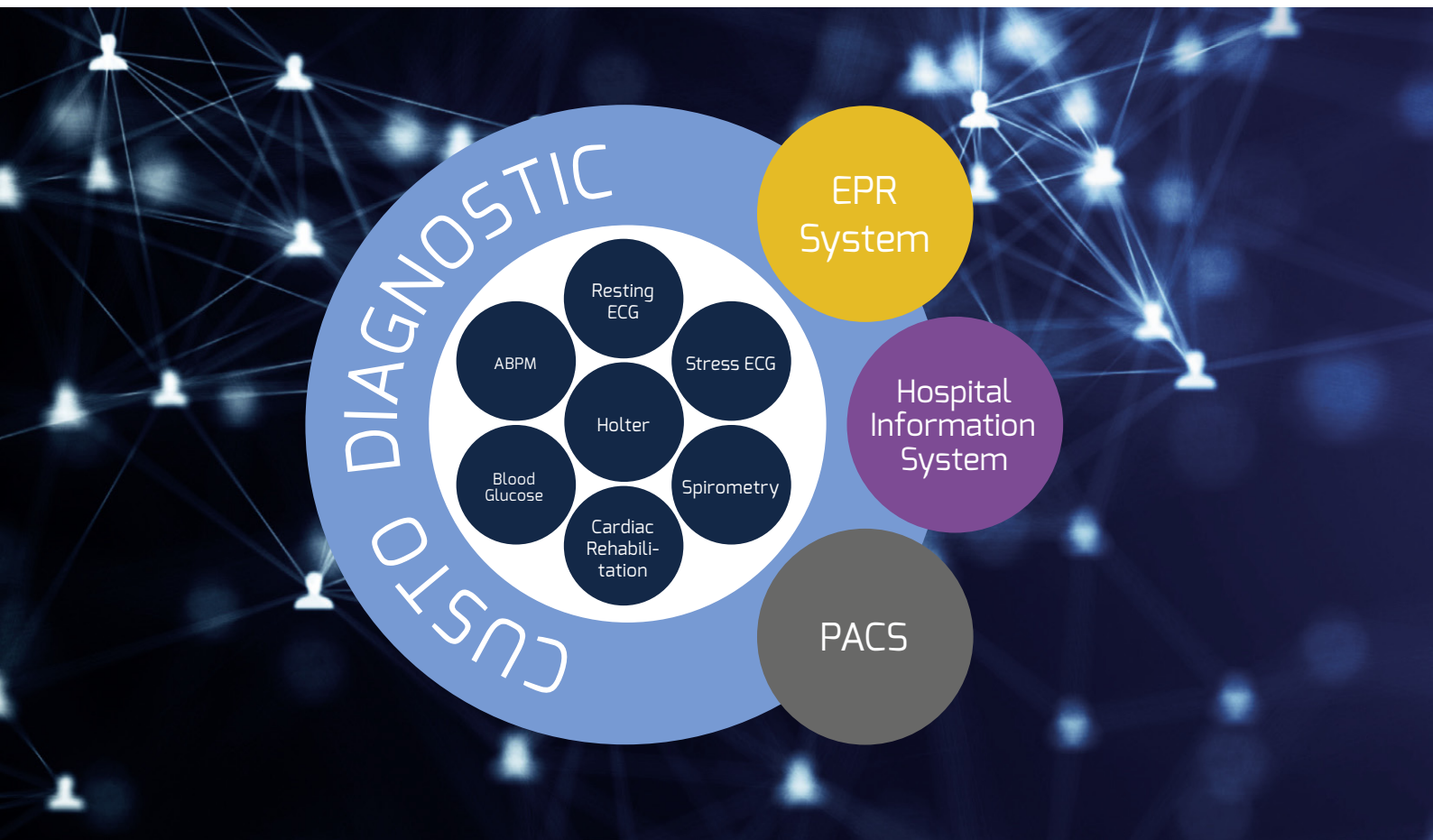


Cardiopulmonary functional diagnostics: For optimum, overall care for your patients with post-/long Covid syndrome

Even after surviving a COVID-19 infection, patients can be confronted with unexpected health problems.

Post-COVID syndrome may occur not only after a severe illness, but also in people who seem to have overcome a SARSCoV-2 infection well. In this case, cardiopulmonary functional diagnostics play an important role, since a SARSCoV-2 infection can affect the cardiovascular system as well as the lungs.

The modular platform custo diagnostic is the perfect answer to the diagnostic requirements of post-COVID syndrome in order to provide adequate care for the patient. All relevant areas are united in one system.





Spirometry for patients with lung function impairment

Impairment of lung function could still be observed six months after patients were discharged from inpatient treatment. Long-term effects such as fibrotic changes in the lung parenchyma were observed in the context of the SARS outbreak in 2003 [2]. Keep an eye on the lung function of your patients – and remember the “new” GLL standard!

[2] Hui, DS.; Joynt, GM.; Wong, KT.; et al. (2005). Impact of severe acute respiratory syndrome (SARS) on pulmonary function, functional capacity and quality of life in a cohort of survivors. *Thorax*, 60 (5), S. 401–409. <https://pubmed.ncbi.nlm.nih.gov/15860716/> (24.02.2021).

For spirometry, custo spiro mobile is the system of choice.



Holter ECG for patients with cardiac arrhythmias

The connection between viral myocarditis and cardiac arrhythmias has been known for a long time. According to a report from Wuhan, 16.7 per cent of hospitalized and 44.5 per cent of ICU patients had complications in the form of cardiac arrhythmias [1].

[1] Lamprecht, B. (2020). Gibt es ein Post-COVID-Syndrom? *Der Pneumologe* (17), S. 398–405. <https://doi.org/10.1007/s10405-020-00347-0> (24.02.2021).

For Holter ECG, the following systems are available: custo guard holter, custo watch und custo flash.



Resting and stress ECG for patients with heart failure

Heart failure patients who need hospital treatment for COVID-19 are at high risk of complications – almost a quarter of them die while in hospital [3].

The ECG is a simple, fast and reliable diagnostic tool for obtaining a comprehensive view of cardiac activities in post-/long-COVID.

[3] Ankeet S. Bhatt; Karola S. Jering; Muthiah Vaduganathan; Brian L. Claggett; Jonathan W. Cunningham; Ning Rosenthal; James Signorovitch; Jens J. Thune; Orly Vardeny; Scott D. Solomon (2021). Clinical Outcomes in Patients With Heart Failure Hospitalized With COVID-19. *JACC: Heart Failure*, 9 (1), S.65-73. <https://doi.org/10.1016/j.jchf.2020.11.003> (24.02.02.2021).

These 12-channel ECG systems are available for resting and stress ECG: custo cardio 300 and custo cardio 400/400 accu.



Ambulatory blood pressure and pulse wave monitoring for hypertensive patients

There are several risk factors for poor outcome in patients with COVID-19. People with high blood pressure seem to have a poor prognosis. Although there is no direct evidence that high blood pressure increases the risk of new infection or adverse outcomes regardless of age and other risk factors [4], each risk factor should be minimized.

[4] Kario, K.; Morisawa, Y.; Sukonthasarn, A.; Turana, Y.; Chia, YC.; Park, S.; Wang, TD.; Chen, CH.; Tay, JC.; Li, Y.; Wang, JG. (2020). COVID-19 and hypertension – evidence and practical management: Guidance from the HOPE Asia Network. *The journal of clinical hypertension*, 22 (7), S. 1109-1119. <https://onlinelibrary.wiley.com/doi/full/10.1111/jch.13917> (24.02.2021).

The following systems are available for ambulatory blood pressure monitoring: custo screen 300/310 and custo screen pediatric.



Pulmonary rehabilitation for patients with post/long COVID syndrome

In order to enable a full functional recovery and a return to a healthy life after Corona, targeted rehabilitation measures should be considered. Targeted rehabilitation can be beneficial for a holistic and rapid recovery as well as the alleviation of a post-COVID syndrome. Although these rehabilitation measures usually have a pulmonary focus, extrapulmonary manifestations and after-effects must be taken into account, especially with regard to post/long COVID syndrome [1].

custo rehab is the system of choice for pulmonary rehabilitation.

NEW: custo clean


Hygienic and safe – the disposable bags for your custo med devices

Hygiene for medical staff and patients as well as device protection against contamination and moisture have become increasingly important in recent years. Due to the current situation, this topic is now particularly in focus. Our "custo clean" product line consists of disposable bags for your custo med devices in order to optimize hygiene. Thanks to the internal adhesive seal, the devices are almost completely enclosed and there is triple protection: protection for you, protection for your patients and protection for your devices. The custo clean hygiene bags are 100% recyclable.



The custo clean hygiene bags are available for the following devices:

custo clean WA3 for custo guard holter with custo wing · custo clean CA3 and CA4 for ECG cable guard 3 and ECG cable guard 4 · custo clean FL for custo flash 500/510/510V/501 · custo clean SC for custo screen 300/310/400 custo clean CR3 for custo cardio 300 · custo clean CR3 ergo for custo cardio 300 in stress test

 Visit us
on YouTube!

www.customed.de

custo med – your local dealer

Contact:
custo med GmbH
Maria-Merian-Str. 6
85521 Ottobrunn
Germany

Phone: +49 89 71098 00
Fax: +49 89 71098 10
Web: www.customed.de
E-mail: info@customed.de

 **custo·med**
EXCELLENCE IN DIAGNOSTICS